

How to set up a brand new console

1. Get console and two sensors together with batteries installed



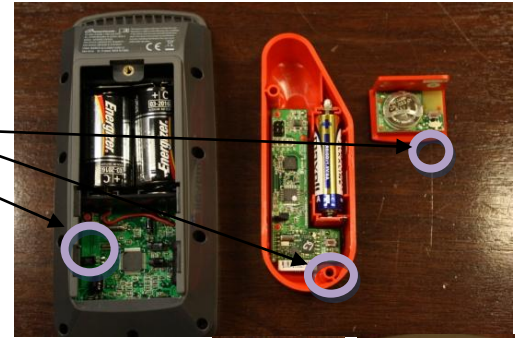
2. Ensure unit is “Power Enabled”

- a. Turn on console by pushing any button
- b. Hold down “Stage” button and “Avg/End” button for 5 seconds to enter service mode – middle display will read “L—“
- c. Tap “Avg/End” button until middle display reads “P—“
- d. IF top right reads “PE” unit is Power Enabled and ready for pairing of sensors
- e. IF top right reads “nPE” unit is non-Power Enabled and must be switched to Power Enabled, continue with steps f-h
- f. Tap the backlight button – Middle display flashes PE0
- g. Tap “Avg/End” button once, middle display will flash “PE1”
- h. Tap backlight button, top right display should now read “PE” and there should be information in both the bottom left and right of the display



3. Pair the consoles and sensors

- a. Locate the pairing button on the console (round red button in battery compartment) and the two sensors (rectangular red button near battery)
- b. Ensure console is on
- c. Tap the pairing button on the console, and then immediately tap the pairing buttons is each of the sensors



d. WHAT SHOULD HAPPEN:

- i. Bottom left and right of the console display will have timers that start to count down
- ii. Red and green lights will light up in back of Power sensor



e. IF PAIRING IS SUCCESSFUL:

- i. Bottom left & right of the console display will read "Pass"
- ii. The green light will light up and remain on for a few seconds in the power sensor before going out
- iii. Pairing is complete, mount the sensors and console on bike



f. IF PAIRING IS NOT SUCCESSFUL:

- i. Console display will show "Fail"
- ii. Ensure batteries are all inserted properly
- iii. Try pairing again

4. Mount console and sensor hardware and perform Tilt Calibration